

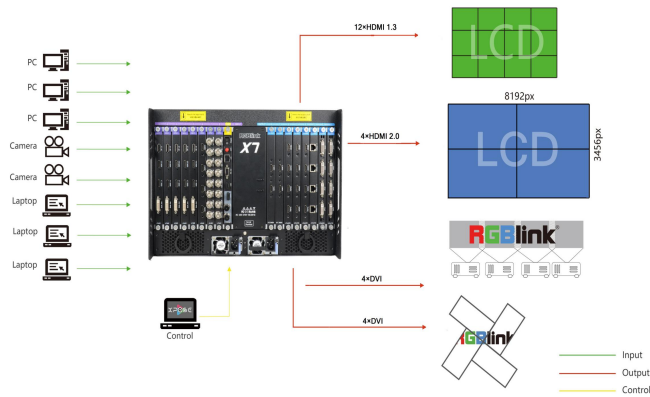
X7



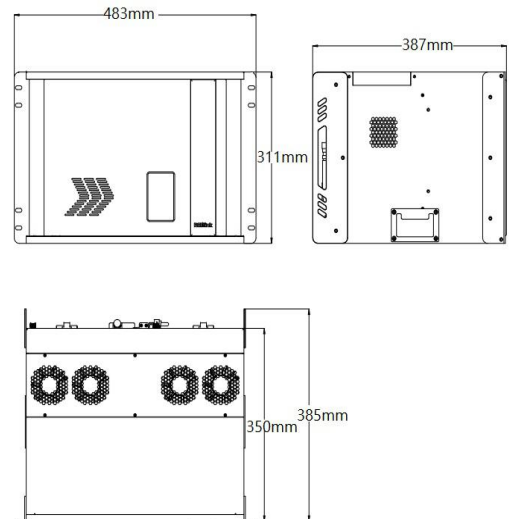
Key Features

- Support for HDR
- 12 Bit processing
- Modular design throughout for input and output
- Hot swap input and output modules
- Up to 64 mega pixels output splicing
- Display up to 64 layers
- Compatible with all display system
- Standard 4K input support
- EDID management
- Preview sources via IP module option
- Gelinlock Digital Reference inputs as standard
- Control via XPOSE and T series consoles
- Redundant PSU option

Application



Dimensions



Order Codes

| Product Code | Item |
|---------------|-----------------------------|
| 310-0007-00-1 | X7 |
| 190-0003-01-0 | Quad DVI Input Module |
| 190-0003-35-0 | Quad 2K D-HDMI Input Module |
| 190-0003-03-0 | Quad VGA Input Module |
| 190-0003-14-0 | Quad 3G D-SDI Input Module |
| 190-0003-07-0 | Quad USB Input Module |
| 190-0003-18-0 | Quad HDBaseT Input Module |
| 190-0003-13-0 | Quad H.264 Input Module |
| 190-0003-11-0 | 4K@30 Digital Input Module |
| 190-0003-15-0 | 4K@60 Digital Input Module |
| 190-0003-17-0 | 12G SDI Input Module |

| Product Code | Item |
|---------------|----------------------------|
| 190-0003-21-0 | Quad DVI Output Module |
| 190-0003-22-0 | Quad 2K HDMI Output Module |
| 190-0003-24-0 | Quad 3G SDI Output Module |
| 190-0003-25-0 | Quad HDBaseT Output Module |
| 190-0003-27-0 | H.264 Output Module |
| 190-0003-28-0 | ARO Rotation Module |
| 190-0003-38-0 | Dual 4K HDMI Output Module |
| 190-0007-01-0 | PVW Module |
| 950-0006-00-0 | Power Supply 1200W |

Tel: +86-592-5771197 | Fax: +86-592-5788216 | E-mail: sales@rgblink.com
 Headquarter: S601 Weiye Building, Torch Hi-Tech Development Zone, Xiamen, Fujian, P.R.C.

RGBlink[®]

www.rgblink.com



Specifications are correct at time of printing and subject to change or alteration without notice.

Specification

| | | | |
|--------------------|--------------------|--|------------------------------------|
| Connectors | Input | <p>8 slots up to 32 inputs, select from below</p> <p>4K@60 Module 1xDVI-I 2xHDMI-A 1xDisplayPort 12G SDI Module 4xBNC (1x12G/6G SDI or 4x3G SDI) 4K@30 Module 2xDVI-I 2xHDMI-A (1 In/1 Loop) 2xDisplayPort (1 In/1 Loop) 3G SDI Module 8xBNC (4 In 4 Loop) HDMI Module 4xHDMI-A DVI Module 4xDVI-I H.264 Module 4xRJ45 HDBaseT Module 4xRJ45 VGA Module 4xDB15 CVBS Module 8xBNC (4 In 4 USB Module 4xUSB-A</p> | |
| | Output | <p>8 slots up to 32 outputs, select from below</p> <p>4K HDMI Module 2xHDMI-A 2K HDMI Module 4xHDMI-A 3G SDI Module 4xBNC DVI Module 4xDVI-I HDBaseT Module 4xRJ 45 H.264 Module 4xRJ 45 2xHDMI-A Rotation Module 4xDVI-I</p> | |
| | PVW | <p>fit to Output Slot, select from</p> <p>PVW Module 1xRJ45 2xDVI-I</p> | |
| | Communication | <p>LAN 1xRJ45 RS 232 1xDB9 USB 1xUSB-A WIFI 1xI-PEX Connector Genlock/Sync 2xBNC (1In/1Loop) 1xHDMI-A</p> | |
| | Power | <p>2 Slots, up to 2 power 1xIEC (Each Power)</p> | |
| Performance | Input Resolutions | <p>SDI SMPTE 480i 576i 720p@23.98/24/25/29.97/30/50/59.94/60 1080i@59.94/60 1080p@23.98/24/25/29.97/30/50/59.94/60 1080psf@23.8/24/25/29.7/30 2160p@23.98/24/25/29.97/30/50/59.94/60</p> <p>DVI SMPTE 720p@23.98/24/25/29.97/30/50/59.94/60 1080p@23.98/24/25/29.97/30/50/59.94/60 1080psf@23.8/24/25/29.7/30 2160p@30 VESA 800x600@60 1024x768@60 1280x768@60 1280x960@60 1280x1024@60 1360x768@60 1440x900@60 1400x1050@60 1600x1200@60 1680x1050@60 1920x1080@60 2048x1080@60 2048x1152@60 2560x960@60 3840x2160@30</p> <p>HDBaseT SMPTE 720p@50/60 1080p@24/25/30/50/60 VESA 800x600@60/75/85 1024x768@60/75/85 1280x768@60 1280x800@60 1280x1024@60/75/85 1360x768@60 1366x768@60 1400x900@60 1400x1050@60 1600x1200@60 1680x1050@60 1920x1080@60 1920x1200@60 2048x1152@60 2560x812@60 2048x816@60</p> <p>CVBS SMPTE 480i 576i VGA VESA 800x600@60 1024x768@60 1280x960@60 1280x1024@60 1360x768@60 1400x1050@60 1440x900@60 1600x1200@60 1680x1050@60 1920x1080@60</p> <p>H.264 176x144 240x180 320x180 320x240 320x256 352x228 352x480 400x224 400x320 480x270 480x272 480x320 480x360 480x480 544x480 608x448 640x360 640x480 704x576 720x404 720x480 720x540 720x576 850x480 1024x576 1280x720 1680x1056 1920x1080</p> <p>DisplayPort VESA 800x600@60 1024x768@60 1280x768@60 1280x800@60 1280x1024@60 1360x768@60 1366x768@60 1400x900@60 1600x1050@60 1600x1200@60 1680x1050@60 1920x1080@60 1920x1200@60 2048x1152@60 2560x812@60 2560x816@60 2560x1600@60 3840x1080@60 3840x2160@60</p> <p>HDMI SMPTE 720p@23.98/24/25/29.97/30/50/59.94/60 1080p@50/59.94/60 2160p@30/60 VESA 800x600@60 1024x768@60 1280x768@60 1280x800@60 1280x1024@60 1360x768@60 1366x768@60 1400x900@60 1600x1050@60 1600x1200@60 1680x1050@60 1920x1080@60 1920x1200@60 2048x1080@60 2048x1152@60 2560x812@60 2560x960@60 2560x1600@60 3840x1080@60 3840x2160@30 3840x2160@60 4096x2160@60</p> | |
| | Output Resolutions | <p>Select from below or configure customized</p> <p>SDI SMPTE 720p@23.98/24/25/29.97/30/50/59.94/60 1080p@23.98/24/25/29.97/30/50/59.94/60 1080psf@23.8/24/25/29.7/30 DVI HDBaseT SMPTE 720p@50/59.94/60 1080p@50/59.94/60 VESA 800x600@60 1024x768@60/75/85 1280x720@50/59.94/60 1280x800@60 1280x960@60 1280x1024@60/75/85 1400x1050@60 1600x1200@60 1920x1080@23.98/24/25/29.97/30/50/59.94/60 2048x1152@60</p> <p>H.264 176x144 240x180 320x180 320x240 320x256 352x228 352x480 400x224 400x320 480x270 480x272 480x320 480x360 480x480 544x480 608x448 640x360 640x480 704x576 720x404 720x480 720x540 720x576 850x480 1024x576 1280x720 1680x1056 1920x1080</p> <p>HDMI SMPTE 720p@25/30/50/60 1080p@23.98/24/25/29.97/30/50/59.94/60 2160p@23.98/24/25/29.97/30/50/60 VESA 800x600@60 1024x768@60 1280x768@60 1280x800@60 1280x1024@60 1360x768@60 1366x768@60 1400x900@60 1600x1050@60 1600x1200@60 1680x1050@60 1920x1080@60 1920x1200@60 2048x1080@60 2048x1152@60 2560x812@60 2560x816@60 2560x1600@60 3840x1080@60 3840x2160@60 4096x2160@60</p> | |
| | Supported Standard | <p>HDMI 2.0 SDI SMPTE ST 2082-1, SMPTE ST 2081-1, SMPTE ST 424, SMPTE ST 292-1, SMPTE ST 259, DVB-ASI, MADI DP 1.2 DVI Dual Link HDBaseT 1.0</p> | |
| | Grey Level | 12 bit | |
| | Color Space | 4:4:4 | |
| | Power | Input Voltage | AC 100V-240V, 50/60Hz |
| | | Max Power | 1200W |
| | Environment | Temperature | 0°C ~ 55°C |
| | | Humidity | 10%~90% |
| | Physical | Weight | Net (Device) 18kg Packaged 45kg |
| | Dimensions | Net(Device) 482mmx385mmx311mm Packaged 547mmx620mmx415mm | |

