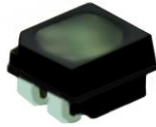


## P3.076 Outdoor SMD1415 320x160mm Module

### Specification

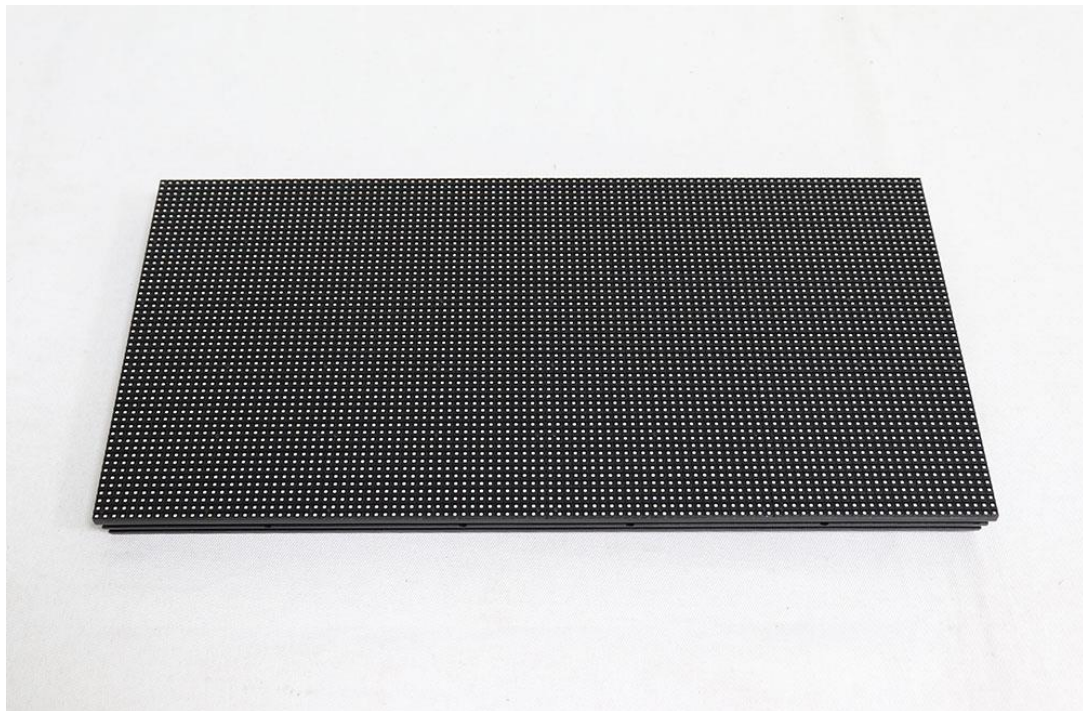
Model No.: **P3.076-O13S-SMD1415-104x52**

#### LED Lamp Specification



| Color | Package | Intensity | Viewing Angle | Wavelength | Testing Conditions |
|-------|---------|-----------|---------------|------------|--------------------|
| Red   | SMD1415 | 48mcd     | 120°/120°     | 622nm      | 25°C,8mA           |
| Green |         | 155mcd    | 120°/120°     | 526nm      | 25°C,5mA           |
| Blue  |         | 20mcd     | 120°/120°     | 470nm      | 25°C,3mA           |

#### Module Photo





### Module Parameter

|                     |                               |
|---------------------|-------------------------------|
| Pixel Pitch         | 3.076mm                       |
| Pixel Configuration | SMD1415                       |
| Density             | 105,688 pixels/m <sup>2</sup> |
| Module Resolution   | 104pixel(L) * 52pixel(H)      |
| Module Dimension    | 320mm(L) * 160mm(H) * 25mm(D) |
| Driving Mode        | Constant current, 1/13 duty   |

### Electricity Parameter

#### Optical Ratings

|                        |   |
|------------------------|---|
| Brightness             | ≥5,000 cd/m <sup>2</sup>                          |
| Viewing Angle          | 120 °(Horizontal); 120 °(Vertical)                |
| Best Viewing Distance  | ≥3m   |
| Gray Grade             | 14 bits   |
| Display Color          | 4.4 trillion colors                               |
| Brightness Adjustment  | 100 grades by software or automatically by sensor |
| Max. Power Consumption | 40W   |

#### Control System

|                   |  |
|-------------------|--|
| Frame Frequency   | ≥60Hz  |
| Refresh Frequency | ≥1920Hz  |
| Input Signal      | Composite Video, S-video, DVI, HDMI, SDI, HD-SDI   |
| Control Distance  | 100m(Ethernet cable);<br>20KM(optical fiber cable) |
| Support VGA Mode  | 800*600, 1024*768, 1280*1024, 1600*1200            |
| Color Temperature | 5000—9300 adjustable                               |

Tel: +86-755-23190947

Website: <https://www.eagerled.com>

E-mail: [manager@eagerled.com](mailto:manager@eagerled.com)

Address: Building C, Zhongyu High-Tech Industrial Park, Heshuikou, Matian, Guangming, Shenzhen, China

|                           |  |
|---------------------------|--|
| Brightness Correction     | Pixel by pixel, module by module, cabinet by cabinet |
| <b>Reliability</b>        |  |
| Working Temperature       | -20~+60 ℃  |
| Storage Temperature       | -30~+70 ℃  |
| Working Humidity          | 10%~90% RH   |
| Lifetime                  | 100,000 hours  |
| MTBF                      | 5000 hours   |
| Continuous Operating Time | ≥72 hours  |
| Protection Grade          | IP65   |
| Out-of-Control Pixel Rate | ≤0.01%   |

**Package**

