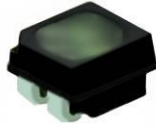


P2.5 240x120mm Indoor SMD1515 Soft Flexible LED

Module Specification

Model No.: **P2.5-ISF24S-SMD1515-96x48**

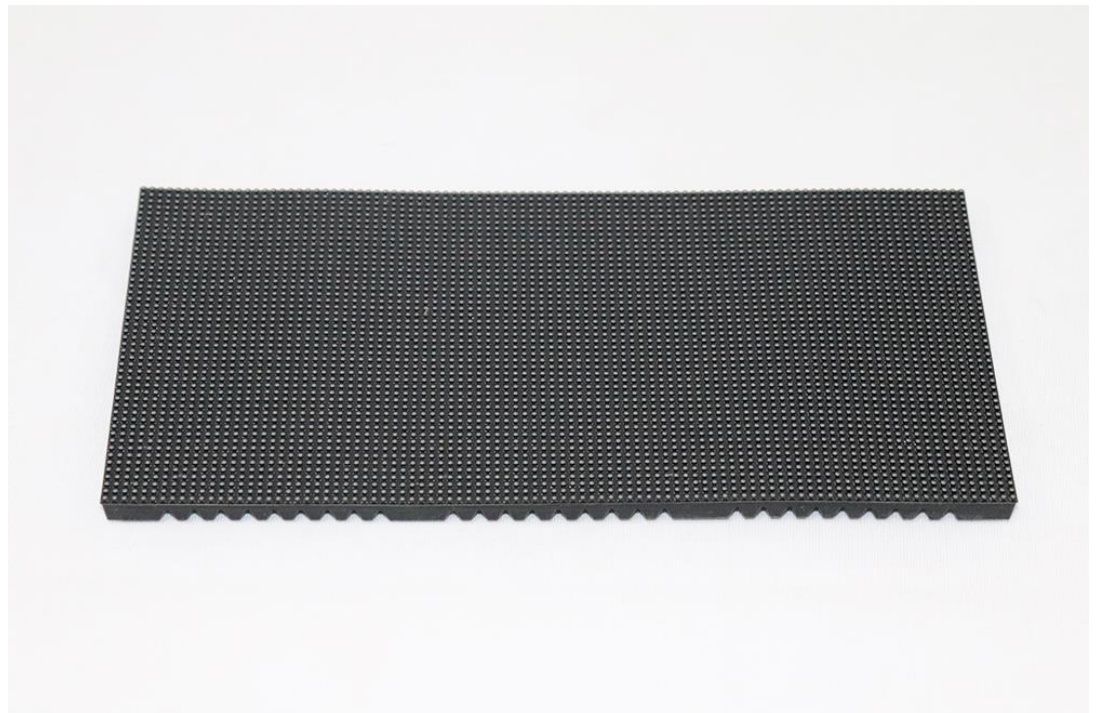
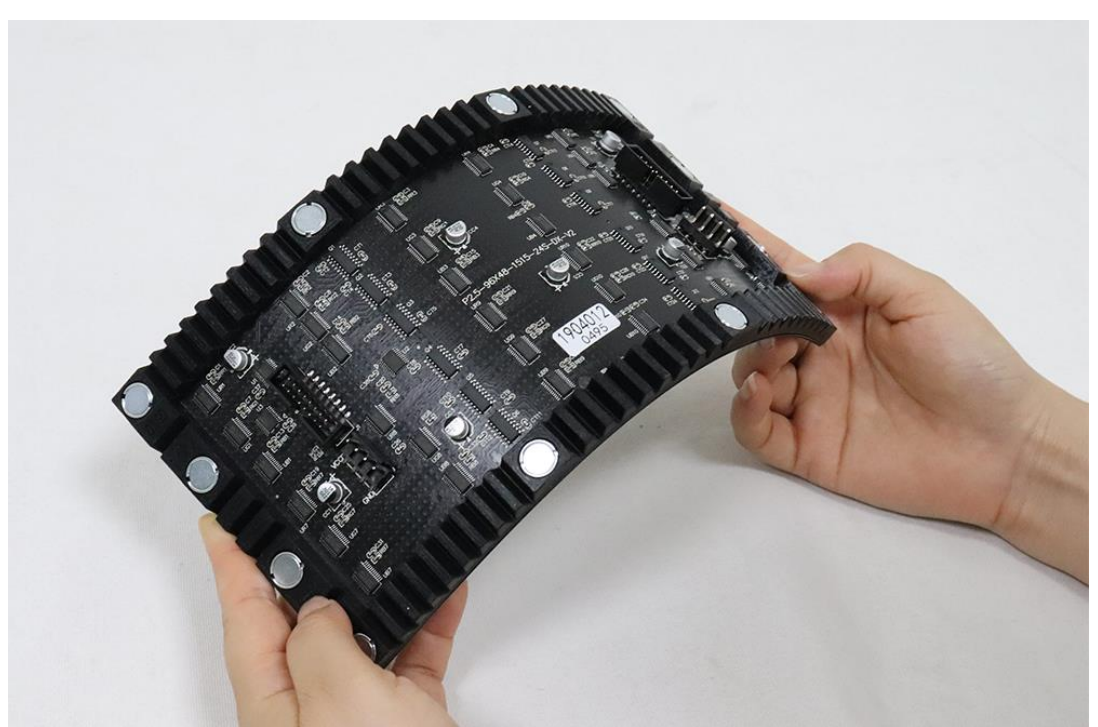
LED Lamp Specification

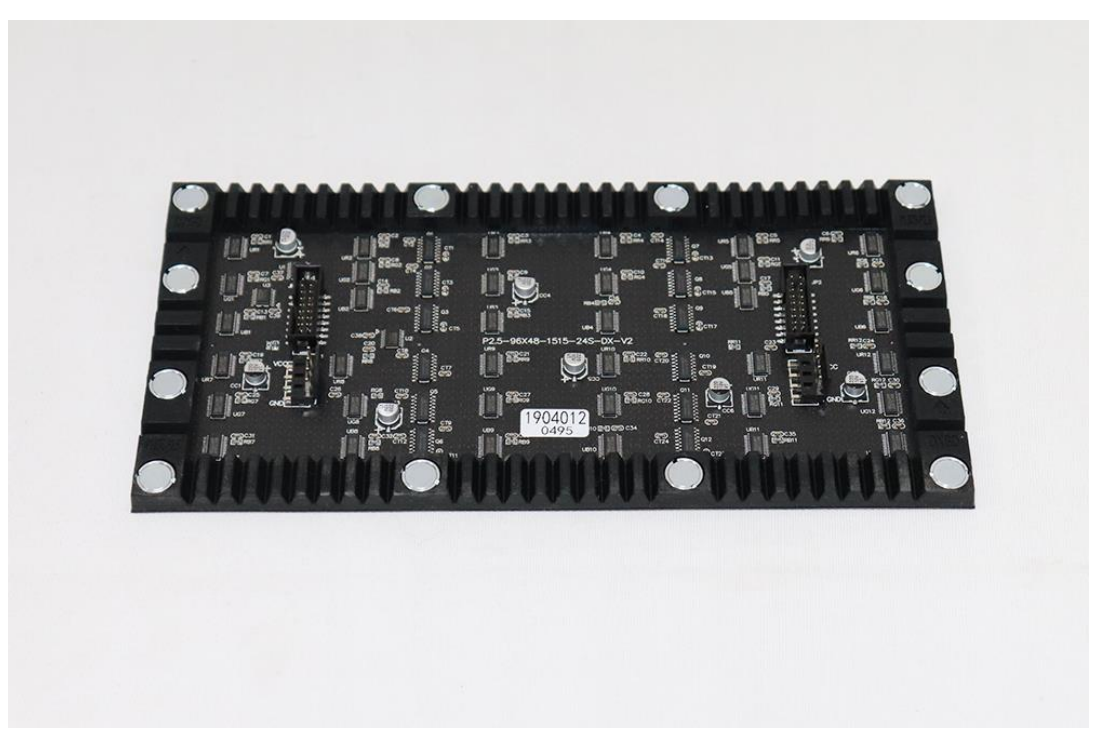


Color	Package	Intensity	Viewing Angle	Wavelength	Testing Conditions
Red	SMD1515	45-65mcd	120°/120°	620-625nm	25°C, 10mA
Green		120-200mcd	120°/120°	516-530nm	25°C, 5mA
Blue		20-40mcd	120°/120°	465-475nm	25°C, 5mA

Module Photo







Module Parameter

Pixel Pitch	2.5mm
Pixel Configuration	SMD1515
Density	160,000 pixels/m ²
Module Resolution	96pixel(L) * 48pixel(H)
Module Dimension	240mm(L) * 120mm(H) * 8.5mm(D)
Driving Mode	Constant current, 1/24 duty

Electricity Parameter

Optical Ratings

Brightness	≥800 cd/m ²
Viewing Angle	120°(Horizontal); 120°(Vertical)
Best Viewing Distance	≥2.5m
Gray Grade	14 bits
Display Color	4.4 trillion colors
Brightness Adjustment	100 grades by software or automatically by sensor
Max. Power Consumption	10 W

Control System

Frame Frequency	≥60Hz
Refresh Frequency	≥1920Hz
Input Signal	Composite Video, S-video, DVI, HDMI, SDI, HD-SDI
Control Distance	100m(Ethernet cable); 20KM(optical fiber cable)
Support VGA Mode	800*600, 1024*768, 1280*1024, 1600*1200
Color Temperature	5000—9300 adjustable

Tel: +86-755-23190947

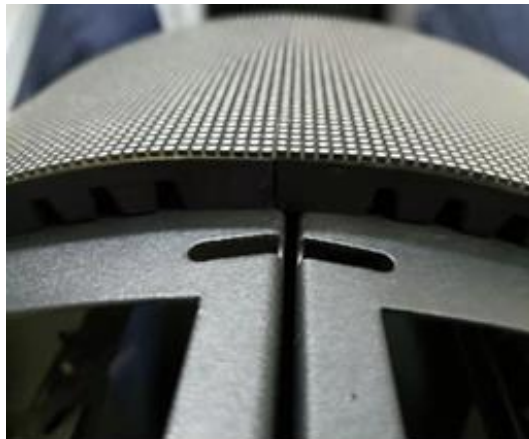
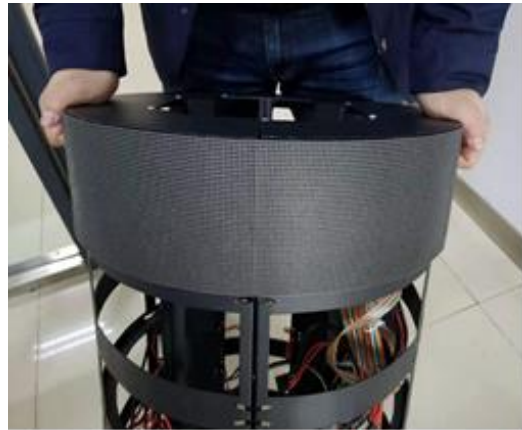
Website: <https://www.eagerled.com>

E-mail: manager@eagerled.com

Address: Building C, Zhongyu High-Tech Industrial Park, Heshuikou, Matian, Guangming, Shenzhen, China

Brightness Correction	Pixel by pixel, module by module, cabinet by cabinet
Reliability	
Working Temperature	-20~+60 °C
Storage Temperature	-30~+70 °C
Working Humidity	10%~90% RH
Lifetime	100,000 hours
MTBF	5000 hours
Continuous Operating Time	≥72 hours
Protection Grade	IP31
Out-of-Control Pixel Rate	≤0.01%

Assembly diagram



Application

