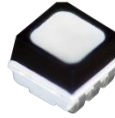


## P10 Outdoor 1/2 Scan SMD3535 320x160mm LED

### Module Specification

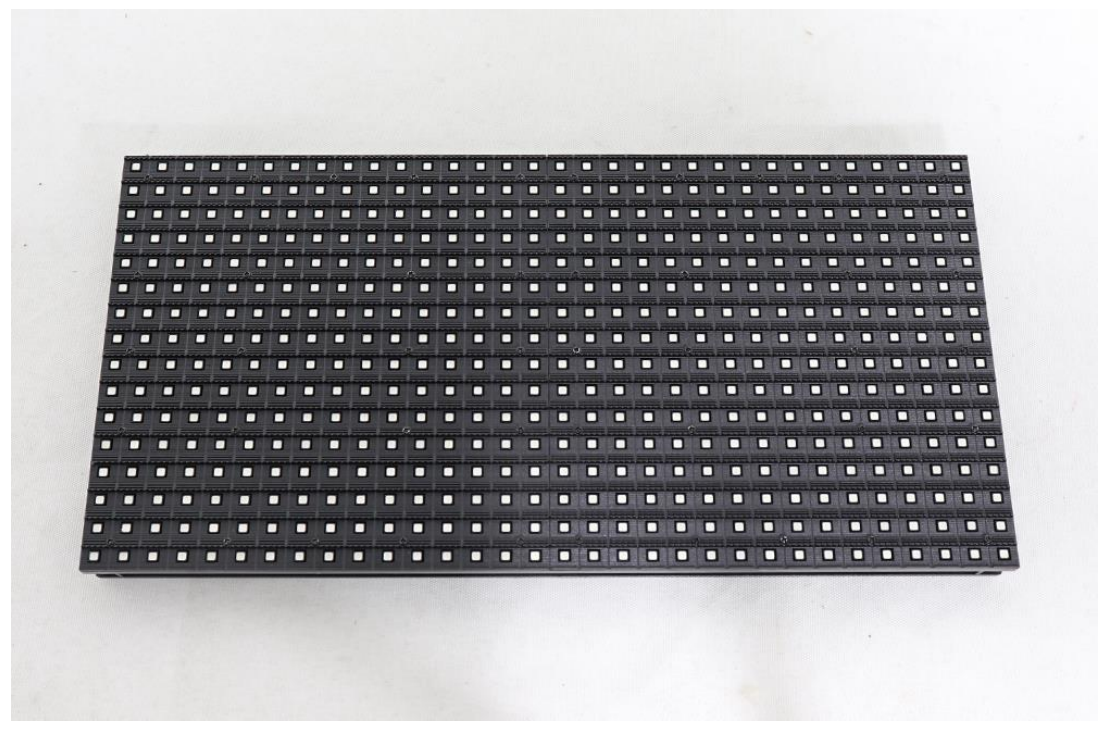
Model No.: **P10-O2S-SMD3535-32x16**

#### LED Lamp Specification



Color	Package	Intensity	Viewing Angle	Wavelength	Testing Conditions
Red	SMD3535	500-650mcd	120°	620-625nm	25°C,20mA
Green		1100-1500mcd	120°	514-535nm	25°C,20mA
Blue		200-400mcd	120°	460-475nm	25°C,20mA

#### Module Photo





### Module Parameter

Pixel Pitch	10mm
Pixel Configuration	SMD3535
Density	10,000 pixels/m <sup>2</sup>
Module Resolution	32pixel(L) * 16pixel(H)
Module Dimension	320mm(L) * 160mm(H) * 25mm(D)
Driving Mode	Constant current, 1/2 duty
Module Mask	Pure black mask---high contrast screen

### Electricity Parameter

#### Optical Ratings

Brightness	≥7,500 cd/m <sup>2</sup>
Viewing Angle	120 °(Horizontal); 120 °(Vertical)
Best Viewing Distance	≥10m
Gray Grade	14 bits
Display Color	4.4 trillion colors
Brightness Adjustment	100 grades by software or automatically by sensor
Max. Power Consumption	40W

#### Control System

Frame Frequency	≥60Hz
Refresh Frequency	≥1,920Hz
Input Signal	Composite Video, S-video, DVI, HDMI, SDI, HD-SDI
Control Distance	100m(Ethernet cable); 20KM(optical fiber cable)
Support VGA Mode	800*600, 1024*768, 1280*1024, 1600*1200

Color Temperature	5000—9300 adjustable
Brightness Correction	Pixel by pixel, module by module, cabinet by cabinet
<b>Reliability</b>	
Working Temperature	-20~+60 ℃
Storage Temperature	-30~+70 ℃
Working Humidity	10%~90% RH
Lifetime	100,000 hours
MTBF	5000 hours
Continuous Operating Time	≥72 hours
Protection Grade	IP65
Out-of-Control Pixel Rate	≤0.01%

**Package**

