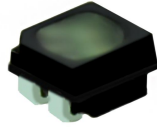


P1.66 Indoor 320*160mm SMD1010 LED Module

Specification

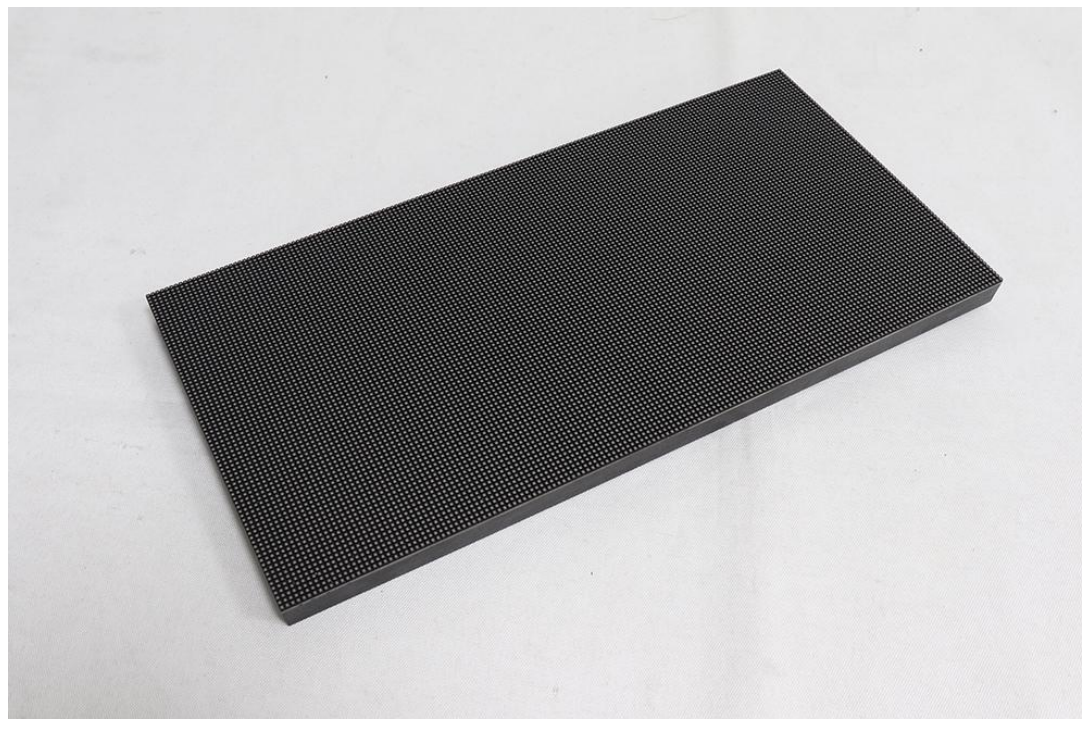
Model No.: **P1.66-HD32S-SMD1010-192x96**

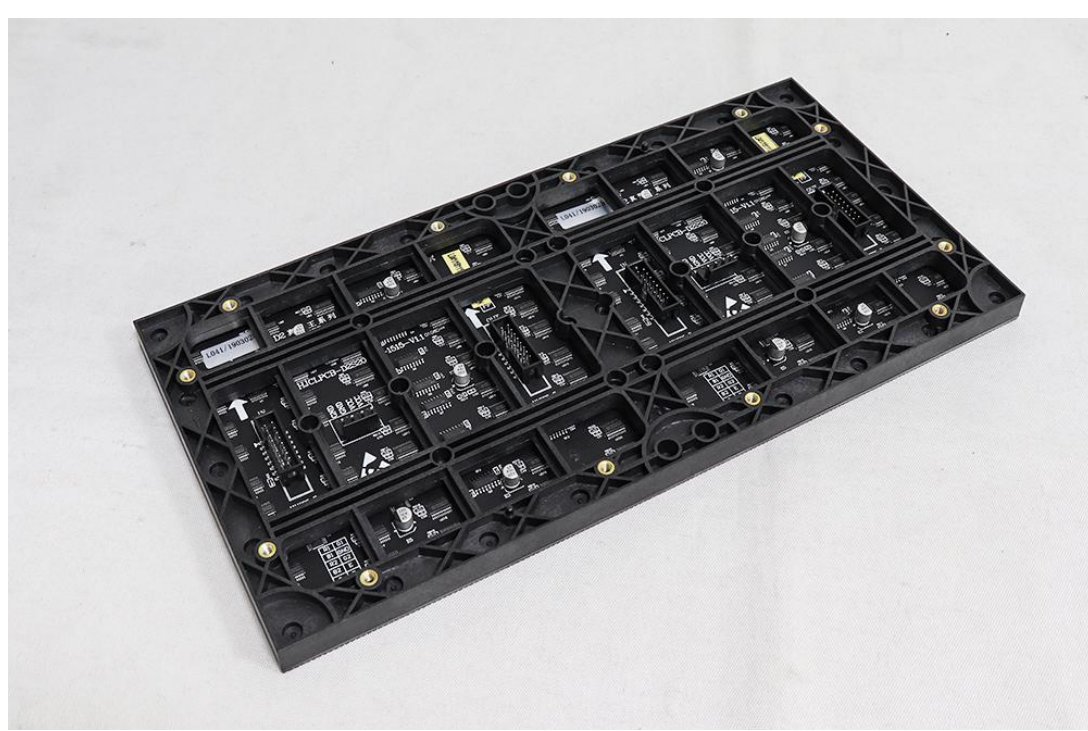
LED Lamp Specification



Color	Package	Intensity	Viewing Angle	Wavelength	Testing Conditions
Red	SMD1010	20mcd	120°/120°	620nm	25°C,5mA
Green		30mcd	120°/120°	530nm	25°C,2mA
Blue		5mcd	120°/120°	470nm	25°C,2mA

Module Photo





Module Parameter

Pixel Pitch	1.66mm
Pixel Configuration	SMD1010
Density	295,664 pixels/m ²
Module Resolution	174pixel(L) * 87pixel(H)
Module Dimension	320mm(L) * 160mm(H) * 15mm(D)
Driving Mode	Constant current, 1/32 duty

Electricity Parameter

Optical Ratings

Brightness	≥500 cd/m ²
Viewing Angle	120°(Horizontal); 120°(Vertical)
Best Viewing Distance	≥1.66m
Gray Grade	14 bits
Display Color	4.4 trillion colors
Brightness Adjustment	100 grades by software or automatically by sensor
Max. Power Consumption	21 W

Control System

Frame Frequency	≥60Hz
Refresh Frequency	≥3840Hz
Input Signal	Composite Video, S-video, DVI, HDMI, SDI, HD-SDI
Control Distance	100M (Ethernet cable); 20KM (Optical fiber cable)
Support VGA Mode	800*600, 1024*768, 1280*1024, 1600*1200
Color Temperature	5000—9300 adjustable

Brightness Correction	Pixel by pixel, module by module, cabinet by cabinet
Reliability	
Working Temperature	-20~+60 °C
Storage Temperature	-30~+70 °C
Working Humidity	10%~90% RH
Lifetime	100,000 hours
MTBF	5000 hours
Continuous Operating Time	≥72 hours
Protection Grade	IP31
Out-of-Control Pixel Rate	≤0.01%

Package





